



AB&R

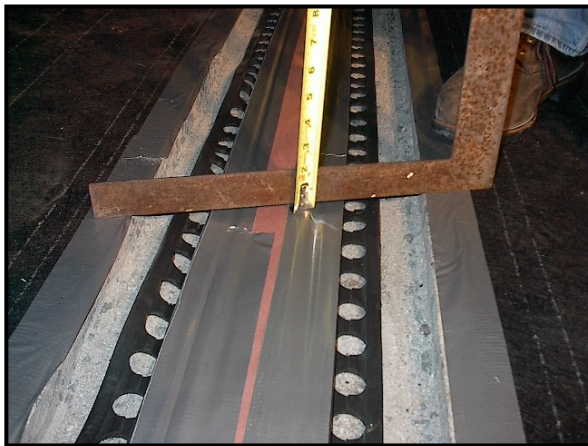
Architectural Building & Restoration, LLC

EXPANSION CONTROL SYSTEMS

Proven Solutions • Outstanding Results



1. Failed compression joints are removed and joint preparation is done to ensure proper bonding of the new system.



2. Sides of the expansion joint are masked and covered with protective roofing paper. Measurements are carefully taken to ensure proper fit as the new seal is installed. Bonding primer is applied under the flaps of the seal, followed by immediate application of the new header material.

~ Continued on reverse ~

ARCHITECTURAL BUILDING & RESTORATION, LLC

407 Rear Mystic Avenue, Unit 16, Medford, MA 02155 | 76 Canal Street, Boston, MA 02114

P: 781.395.2600

E: mike@abandr.net

www.abandr.net

RESTORATION • WATERPROOFING • CONTRACTING • CONSULTING



The Joint system may be changed for a vertical surface



The repair area on the right side indicates where the deck was raised in accordance with the manufacturer's requirements.



◀ The finished system:

The surface is troweled smooth and the masking and protection is removed.

Once cured, the new joint is ready for traffic.

ARCHITECTURAL BUILDING & RESTORATION, LLC

407 Rear Mystic Avenue, Unit 16 , Medford, MA 02155 | 76 Canal Street, Boston, MA 02114

P: 781.395.2600 E: mike@abandr.net www.abandr.net

RESTORATION • WATERPROOFING • CONTRACTING • CONSULTING